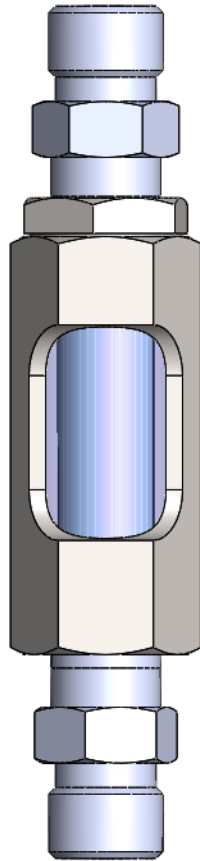


SulfaTrack™ Indicators V1/V2/VI

Product Specification Sheet



SulfaTrap LLC

SulfaTrack™ Indicators V1/V2/VI

TECHNICAL SPECIFICATION

SulfaTrack™ Indicators

TYPICAL APPLICATIONS

SulfaTrack™ indicators are designed for use in gas phase systems to indicate various sulfur species including sulfides, mercaptans and thiophenes at sub ppm levels.

OPERATING PRINCIPLE

SulfaTrack™ color change indicators use a chemical adsorbent media that changes color upon exposure to sulfur compounds. The granular adsorbent media is loaded into a transparent flow sight housing to allow process gas to flow through the media. The sulfur compounds in the gas react with the media causing its color to change. Once a SulfaTrack™ indicator has been exposed to targeted sulfur compounds the adsorbent will change color and the operator will be aware of that sulfur is present in the gas stream. After detecting the color change (hence sulfur presence in the gas) the adsorbent cartridge should then be replaced with a new one for further use.

V1, V2 AND VI CONFIGURATIONS

The flow sight on the left has two separate media; the SulfaTrack™-V2 indicator (with the white color) located in the top portion for COS detection, and the SulfaTrack™-V1 indicator (the blue media) located in the bottom to detect all other sulfur compounds. The indicator on the right contains only the SulfaTrack™-V1 indicator material. Indicators can be ordered in the V1 (blue indicator material only), V2 (white COS indicator material only) or VI (combination blue and white COS indicator material) configurations depending on the customers detection requirements.

REPLACEMENT ADSORBENT INDICATOR CARTRIDGES

Replacement cartridges for all indicator types listed above are available for order. These replacement cartridges include replacement gaskets and O-rings to ensure a leak free seal upon replacement.



Figure 1. SulfaTrack™ indicators; the indicator on the left capable of speciating COS (VI indicator) and the indicator on the right without COS detection capability (V1 indicator).

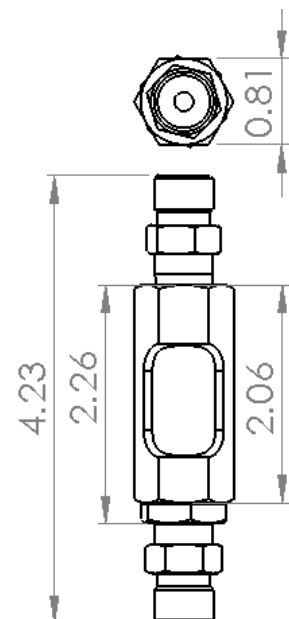


Figure 2: Indicator housing dimensions



CONTACT

SulfaTrap LLC

www.sulfatrap.com

5310 Ward Road

Arvada CO, 80002

Tel: 720 352 7919

gokhan.alptekin@sulfatrap.com

thaanstad@sulfatrap.com